



**SMT**  
S O L I D

**JUKI**  
JUKI AMERICA, INC.  
ELECTRONIC ASSEMBLY SYSTEMS

# RV-2-3DH/RV-2-3DHL

**INSPECTION**

We offer complete SMT solutions with cutting-edge technology and specialized support.



MX 81-282-8092  
US 10-791-8343





# RV-2-3DH RV-2-3DHL

## PWB VISUAL INSPECTION MACHINE (3D AOI/SPI)

High-speed and high-precision  
board inspection!

Experience the pinnacle of PCB inspection with JUKI's RV-2-3DH and RV-2-3DHL, designed for high-speed, high-precision board assessment like never before. Equipped with advanced 12-megapixel CMOS cameras, these machines deliver 3D AOI and SPI capabilities in one comprehensive system. With a standard resolution lens capable of inspecting SMD components down to 0.4×0.2 mm (12 μm) and an optional lens that reaches an unprecedented 5 μm resolution, the RV-2-3DH/RV-2-3DHL ensures flawless inspection of next-generation 0201 metric SMDs. Enhanced with cutting-edge DLP projectors and a clear vision capturing system powered by high-bright LED lighting, these machines significantly reduce inspection times, making them leaders in throughput and productivity.

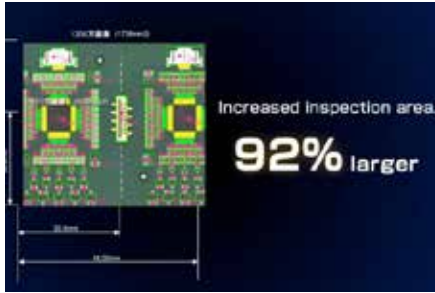
The RV-2-3DHL takes innovation a step further by accommodating extended board lengths up to 650×590 mm, making it ideal for complex and large-scale projects. These systems are built to streamline programming with ready-to-use libraries, drag-and-drop package management, and all-in-one software that eliminates the need for third-party CAD/Gerber converters—saving programming time and costs. Whether utilizing its SPI close-loop communication feature to optimize printing quality or leveraging its advanced mechanical measurement inspection capabilities, the RV-2-3DH/RV-2-3DHL delivers precision, speed, and flexibility to meet the evolving needs of any SMT production line.

### AUTOMATE INSERTION, ACCELERATE PRODUCTION



#### Advanced DLP Projector System

Precision imaging solutions for every  
need.



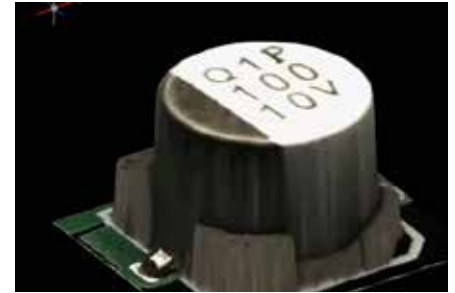
### Superior High-Resolution Lens

See finer details with a 5µm resolution lens.



### Flexible Inspection Sizes

Adapt to varied sample sizes effortlessly.



### Advanced 3D Inspection Tools

Precision imaging with optional 3D inspection add-ons.

## SPECIFICATION

ITEM	RV-2-3DHL	
Model	RV-2-3DH	RV-2-3DHL
Board size	Standard: 50mm~50mm~410mm~300mm Long board: 50mm~50mm~630mm~300mm Marking unit: 50mm~50mm~330mm~250mm	Standard: 50mm~50mm~410mm~590mm Long board: 50mm~50mm~650mm~590mm Marking unit: 50mm~50mm~330mm~590mm
Test resolution	12 µm (standard resolution) / 5 µm (high resolution)	
Image angle	Image angle 48.0 x 36.0 mm, 20.0 x 15.0 mm	
Inspection items	Shorting, shear, polarity, side-reverse, unsoldered solder, bridge, solder quantity, insertion part omission, character recognition*1	
Inspection speed 3D (optimum condition)	61.8cm <sup>2</sup> / sec	
Power supply	AC 3-phase 200-230V	
Apparent power	2.0kVA or less	
Air pressure	0.5±0.05MPa	
Air consumption (standard condition)	10L/min	
External Dimensions (WxDxH)	940mm x 1,276 mm x 1,530 mm	940 mm x 1,800 mm x 1,530 mm
Weight	approximately 1,000kg	approximately 1,250kg

## Industrial solutions, innovation and precision.

**Wilfredo Fonseca**

**CEO**  
wfonseca@solid-mfg.com  
+1 (915) 777.1333

**William Félix**  
**Regional Sales Manager**  
wfelix@solid-mfg.com  
+1 (915) 777.0739

**Ramón Aguilar**  
**Sales Executive**  
raguilar@solid-mfg.com  
+52 (656) 144.5502

**Maros Espinoza**  
**Sales Manager**  
mespinoza@solid-mfg.com  
+1 (915) 777.0766

**Alan Santiesteban**  
**Sales Executive**  
asanti@solid-mfg.com  
+52 (656) 345.5806

**Diego González**  
**Sales Executive**  
dgonzalez@solid-mfg.com  
+1 (915) 999.3434

**Heriberto Huerta**  
**Sonora Commercial Representative**  
hhuerta@solid-mfg.com  
+52 (662) 417.6320

**Enrique Torres**  
**Sales**  
etorres@solid-mfg.com  
+52 (33) 1974.5755

**Francisco Zamudio**  
**Business Development**  
fzamudio@solid-mfg.com  
+1 (915) 343.2203

**José Pérez**  
**Sales**  
jperez@solid-mfg.com  
+52 (656) 388.1220

**Johanny Jacome**  
**Northeast Sales Manager**  
jjacome@solid-mfg.com  
+52 (81) 2080.8334

**José Luis Díaz**  
**Commercial Manager Tijuana**  
jdiaz@solid-mfg.com  
+52 (656) 754.2302

**Saúl Ramírez**  
**Automation Manager**  
sramirez@solid-mfg.com  
+1 (915) 777.1175

**Jaime Chavarría**  
**Service Technician**  
jchavarría@solid-mfg.com  
+1 (915) 777.1136

**Emiliano Zamudio**  
**Technical Support**  
emiz@solid-mfg.com  
+52 (656) 806.7193

**José Luna**  
**Field Service Engineer**  
jluna@solid-mfg.com  
+52 (656) 345.5796



## OFFICES IN MEXICO AND THE UNITED STATES

### Offices in Mexico

#2225 Parque Industrial Fernández C.P. 32649  
Cd. Juárez, Chih. Méx.  
Ph. +52 (656) 624.1530

### Offices in the USA

1410 Gail Borden C-4  
El Paso, TX. 79935  
Ph. +1 (915) 300.2401

### More information

info@solid-mfg.com  
www.solid-mfg.com

